

PHAENON XD

LASER PROJECTORS

LaserAnimation
SOLLINGER



PHAENON XD COMPACT HOUSING

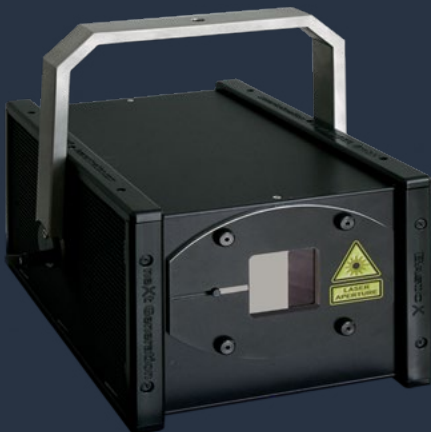


The PHAENON XD series are high-end color laser projectors for professional applications with wide range of laser output powers. Integrated is a modular laser system with laser diode modules from LaserAnimation in red and blue combined with green (520 nm diode / 532 nm OPSL) plus yellow or orange Genesis Taipan OPSL laser source. All laser colors are combined to a focused beam of high intensity. The laser sources stand out due to their high beam quality in rich colors, low divergence as well as their enormous durability.

nation and focusing and their professional placement and setup guarantee a sharp precise beam with a homogeneous beam profile and low divergence, even over longer distances.

Depending on the laser model, the PHAENON XD series is usually delivered in two housing sizes. The mini housing (see small picture) measures 37.5 x 29.1 x 22.3 cm and the compact housing measures 42 x 40.6 x 22.3 cm. In addition, the regular model of the PHAENON XD AT comes with housing dimensions of 62 x 40.6 x 22.3 cm.

The PHAENON series laser projectors have been known in the industry for years for their excellent quality, exceptional reliability, guaranteed safety and high ease of use. That's why they are the first choice of numerous renowned companies from the event sector for extensive installations with lasers.



PHAENON XD MINI HOUSING



PHAENON XD

LASER PROJECTORS

LaserAnimation
SOLLINGER

Control Modes

AVB / TSN interface for data streaming via Ethernet, AIFF player function, stand-alone player, ILDA, DMX / ArtNET, control software "LA.toolbox" for PC or Mac included

Typical wavelengths:

638 nm | 577 nm / 590 nm | 520 nm / 532 nm | 445 nm

Type

CW analog modulated

Beam Diameter*

4.5 mm

Beam Divergence*

< 0.6 mrad

Scanner

CT 6210, Turboscan XD: 60 kpps ILDA 8°, max 80° (typical 50°), reaction time (2° opt. step): < 0,2 ms, aperture: 4 mm

Weight

ca. 18 - 43 kg (depending on model)

Dimensions

L 37.5 cm x W 29.1 cm x H 22.3 cm (only XD 15000 & XD 18000)

L 42.0 cm x W 40.6 cm x H 22.3 cm

IP Rating

IP54

Thermal

Ambient temperature: - 5°C - +50°C

Electrical Input

Universal input: 85 VAC - 264 VAC, 50 - 60 Hz

Power consumption: 450 W - 950 W (depending on model)

Laser Safety

- Electronic mask to define protected areas in a laser projection using controlling software
- Scanfail safety circuit
- Physical adjustable beam blocker
- Key switch, Interlock, emission LED

Climate Components

- Generously dimensioned heat sink as base for all temperature relevant components
- Peltier elements for either heating and cooling
- Temperature controlled low noise fans with high efficiency

Standardized Connectors

- AC Mains Connector: Neutrik PowerCon TRUE1
- Projector Signal, analog: ILDA In D-sub 25, differential inputs
- Remote: 7pin XLR (external key switch, interlock)
- DMX In / Thru
- LAN

Properties

- Modular laser system with LaserAnimation manufactured red and blue laser diode modules combined with green diode resp. green and additionally yellow or orange Coherent Genesis Taipan OPSL modules (depending on model, see below)
- Integrated intelligent LaserAnimation Sollinger Mainboard
- Control via "LA.toolbox" software (electronic mask, color correction, DGC (Digital Geometric Correction), laser disable). Software included in delivery
- AVB / TSN interface for streaming data via Ethernet
- Motorized beam adjustment for an exact color overlay
- CT 6210 scanner with proven TurboscanXD driver electronics
- Dante2ILDA optionally possible
- DSP Mark2 resp. DSP Mark2 playback optionally available
- Grating module option available (6 gratings)

*FWHM average depending on model

Laser Projector	Guaranteed output power	Red Module (638 nm)	Yellow / Orange Taipan OPSL (577 nm / 590 nm)	Green Module (520 nm / 532 nm)	Blue Module (445 nm)
PHAENON XD 15000	14 W	4.8 W	-	4 W (520 nm)	8 W
PHAENON XD 18000	17 W	4.8 W	-	8 W (532 nm)	8 W
PHAENON XD 20000	19 W	6.4 W	-	8 W (532 nm)	8 W
PHAENON XD 22000 O	21 W	6.4 W	3 W (590 nm)	8 W (532 nm)	8 W
PHAENON XD 25000 Y	23 W	6.4 W	5 W (577 nm)	8 W (532 nm)	8 W
PHAENON XD 24000	21 W	9.6 W	-	8 W (532 nm)	8 W
PHAENON XD 30000 Y	26 W	9.6 W	6 W (577 nm)	8 W (532 nm)	8 W